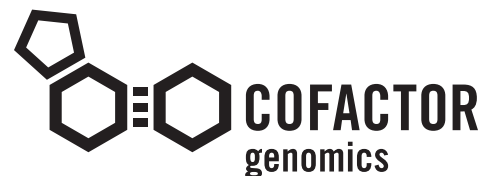
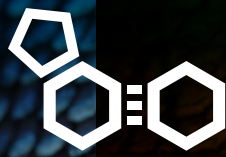


Herd about the newest discovery tool in Bovine genomic research?

Visit **booth 532**
and **poster #0080**
to find out what you've
been missing.



Discover an unprecedented front-to-back solution for the discovery, characterization, and visualization of causative variation and hypothesis-neutral haplotype and marker analysis across any breed of beef and dairy cattle.



COFACTOR
genomics

D&A design
& analysis

Move your research from phenotype to genotype with the world's first bovine exome capture solution.

The way to get more meaningful results is to selectively enrich, sequence, analyze and detect variants in coding and regulatory regions of the Bovine (cow) genome. Cofactor Genomics, with mRNA and EST data from the Bos taurus community and the USDA-Agricultural Research Service, designed probes to capture the most comprehensive set of coding and regulatory regions possible. Cofactor utilized the Bos taurus assembly from the Center for Bioinformatics and Computational Biology at University of Maryland, called UMD3.1, as the foundation for the development of the world's first Bos taurus exome capture product.

Cofactor's Bench To Barnyard™ products and services offer an end-to-end solution for researchers to quantify, discover, and visualize genomic variation from the cow genome. We provide hybridization, library generation, sequencing, analysis, and visualization services for all samples.

- Hypothesis neutral: no prior knowledge of genomic variation necessary... selectively pull-down and sequence approximately 46 Mb of the cow genome for hypothesis-neutral marker and haplotype analysis
- Selectively breed for disease resistance, carcass quality, and palatability
- Investigate and discover causative variation in cattle, at unparalleled resolution
- Probe the regulatory and coding regions of the cow genome without spending money to sequence repetitive areas

Cofactor D&A is your Design & Analysis research department. The best possible results begin with the best possible people.

There is nothing more important than designing an experiment properly, and being able to analyze the data in a useful manner. That's what Cofactor provides. A customized design and analysis approach that produces meaningful results for your research. Our years of expertise in Next-Gen sequencing combined with our bioinformatics and analysis skills give you the best possible results, no matter sample type, size, or timeframe.

Increase your replicates or sample number with exome capture versus whole-genome sequencing.

Visit **booth 532**
and **poster #0080**
to find out what you've
been missing.